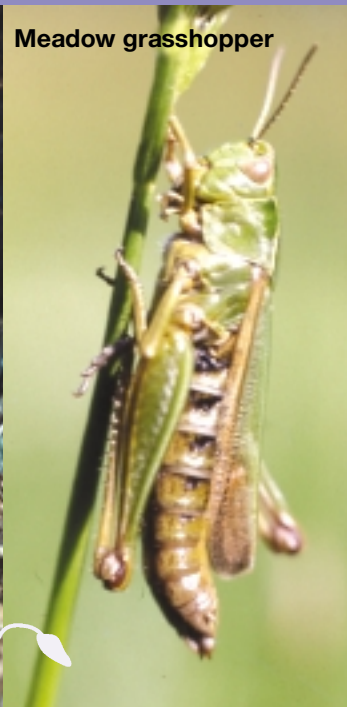




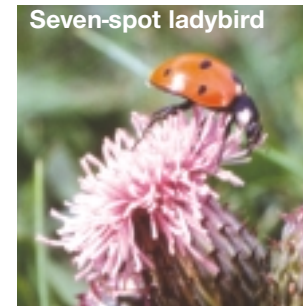
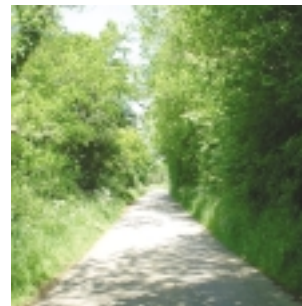
Woodmouse



Meadow grasshopper



Common toad



Seven-spot ladybird

Highway Authorities



North Yorkshire County Council
tel: 01609 532586 (Highway Asset Management)



Redcar & Cleveland Borough Council
tel: 08456 126 126



Highways Agency
tel: 08457 50 40 30

WHAT CAN YOU DO?

YOUR PARISH CAN HELP CARE FOR ROADSIDE VERGES BY:

- Mapping and surveying verges to highlight the most valuable ones for wildlife. Look for the best display of wild flowers or thick hedges – a good habitat for song birds
- Keeping an eye on the most valuable verges and letting the relevant local authority know of any threats to the survival of important plants and wildlife
- Seeking advice about how to care for the best verges in your area from the National Park Authority, Howardian Hills AONB or your local Highways Authority (for contact details please see back cover)

HOW CAN WE HELP YOU?

WE CAN HELP YOU CARE FOR ROADSIDE VERGES BY:

- Providing further information and advice about how to manage verges
- Arranging help to survey and manage your verges
- Supplying maps of verges with conservation interest in your area



For further information and advice about caring for roadside verges please contact:

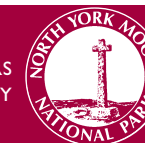
Biodiversity Officer, North York Moors National Park
The Old Vicarage, Bondgate, Helmsley, York YO62 5BP
tel: 01439 770657 fax: 01439 770691
email: general@northyorkmoors-mpa.gov.uk
www.moors.uk.net



AONB Officer, Howardian Hills AONB
The Mews, Wath Court, Hovingham, York YO62 4NN
tel: 01653 627164 fax: 01653 627167
email: info@howardianhills.org.uk
www.howardianhills.org.uk



Countryside Officer, Ryedale District Council
Ryedale House, Malton YO17 7HH
tel: 01653 600666 fax: 01653 690834
email: enquiries@ryedale.gov.uk
www.ryedale.gov.uk



Help safeguard our roadside verges



Photo credits: Bob Dicker, Jenny Dicker, Jill Magee, Nan Sykes, John Knight



Roadside verges are one of the last refuges of wild flowers in Britain

Goldfinch



WHY ARE ROADSIDE VERGES IMPORTANT?

Most of us pass roadside verges every day without giving them much thought. Their importance is often overlooked but they are an absolutely vital part of our environment and heritage.

Verges are full of flowers and history. Many verges line rural roads that have linked communities and countryside for generations and they provide an important connection with the past.

Betony



AN ANCIENT PAST

Many verges are remnants of old grasslands and woodlands and still support some of the species that once thrived there – including those that have vanished elsewhere in our countryside. Modern verges also provide vital havens for birds and small mammals.

Managed properly, verges can be important assets for the local area. A well-managed verge can provide a colourful display of native wild flowers and homes for wildlife. Verges also act as wildlife corridors, enabling animals to travel between different habitats.

Brimstone butterfly



WHY DO THEY NEED OUR HELP?

Many roadside verges are no longer managed as they were in the past – cutting for hay and grazing with livestock. Getting the management right is very important. Cutting verges in full flower, not cutting them at all or making them too neat and tidy can reduce their value as wildlife havens.