

## AONB Contacts

### AONB Manager

Paul Jackson

paul.jackson@northyorks.gov.uk

### AONB Officer

Liz Bassindale

liz.bassindale@northyorks.gov.uk

### AONB Assistant

Maggie Cochrane (part-time)

maggie.cochrane@northyorks.gov.uk

The Mews, Wath Court  
Hovingham  
York  
YO62 4NN

Telephone 0845 034 9495

[www.howardianhills.org.uk](http://www.howardianhills.org.uk)

# Howardian Hills

Area of Outstanding Natural Beauty

# AONB NEWS

Issue 9

October 2008

## LONG TERM BENEFIT IN THE HOWARDIAN HILLS

Year Three of the AONB's Sustainable Development Fund (SDF) supported a range of projects bringing long-term sustainable benefits to the biodiversity, communities and economy of the AONB.

Amongst the projects it enabled were:

- the purchasing of heavy-duty mowers and raking equipment for conservation habitat management (Basics Plus)
- the production of a Churchyard Habitats booklet (Yorkshire Wildlife Trust)
- the launching of the Global to Local Education Project (GLOBE) in AONB schools (BTCV)
- recycling collections for business paper waste and household white goods (Basics Plus)
- the construction and interpretation of educational compost bins at Castle Howard Arboretum (The Arboretum Trust)
- restoration of 5 traditional direction signs (NYCC Highways)
- the development of a wood-fuel programme (Yorwoods)
- a dual-purpose vehicle, to move Exmoor Ponies used for conservation grazing in and beyond the AONB and to act as a mobile display unit at local shows and events (Yorkshire Exmoor Pony Trust)

The SDF for 2008-09 is now open to applications and the fund for this financial year is £50,000. If you have a project in mind that would benefit the local economy, environment or community, and which is in need of financial support, then please get in touch with a member of the AONB Team or take a look at the AONB website for further information.

If you're thinking the Fund might be able to help then why not get in touch to find out? It could make all the difference...

## Inside this Issue

	Page
<i>Long Term Benefit in the Howardian Hills</i>	1
<i>Annual Report 2007/08</i>	2
<i>Leading the way</i>	3
<i>CAN DO Lime and Ice Project – Bid successful</i>	3
<i>CAN DO Parish Fund – Don't miss this opportunity</i>	3
<i>Mobile Post Office</i>	4
<i>A very special little-dale</i>	4
<i>Be CALM</i>	4
<i>Reduce, re-use, recycle</i>	5
<i>Junior Ranger Club</i>	6
<i>AONB Management Plan review update</i>	6
<i>Howardian Hills AONB fact file</i>	6



Amotherby Open Churchyard event (AONB Unit)



GLOBE – Sustainability Action Plan development with Malton High School (BTCV)

# ANNUAL REPORT APRIL 2007 – MARCH 2008

In this regular feature, we tell you about some of the work that the AONB Unit funded or facilitated during the last financial year.

## Landscape

- 3.4km of new hedge planting and gapping-up grant aided by the Joint Advisory Committee.
- Repairs/maintenance to 617m of roadside walls also grant aided.
- 41 specific Planning proposals scrutinised. Comments submitted on 15 schemes, where a potential impact on the AONB landscape was identified or support was given.

## Landscape/Biodiversity

- Advised 1 farmer about Entry Level Stewardship.
- Prepared 1 Farm Environment Plan for a Higher Level Stewardship application.
- 13 English Woodland Grant Scheme consultations appraised for impact on the AONB; comments submitted on 9 schemes.
- 7 consultations on other Development (mainly within roads or verges) also scrutinised.

## Biodiversity

- Replanted 1.5ha (3.7 acres) of native woodland/plantation at Gilling, to convert to native broadleaves.
- 42 new individual field/hedgerow trees planted.
- Conservation grazing of 6 SINC's or other important sites by Exmoor ponies.
- Management works on 43 Special Interest Road Verges.
- 10 black poplar cuttings taken winter 2007. 10 cuttings taken winter 2006 being grown on by Thirsk Community Woodland Group.
- 170m of open beck restored at Brandsby.
- Practical work at Littledale SINC.
- Installed 15 barn owl boxes for local landowners and 20 hedgehog boxes built by volunteers for AONB schools and community areas.
- Production of 3 information leaflets on the value of hedges, their maintenance and new planting.



Hedge restoration, Barton-le-Street (AONB Unit)

## Historic Environment

- City of Troy turf Maze maintained.
- Scrub clearance from 340m of historic Park Wall.
- Restoration of the locations of 2 Estate boundary stones.

## Recreation and Access

- A Local Information and Walks leaflet published for Welburn.
- Four guided walks offered.
- Condition surveying of 131 routes (110km) of Rights of Way by volunteers.
- Litter removed from at least 12 sites, on a regular basis.

## Schools/Junior Ranger Club

- 135 pupils on 6 AONB Discovery Days.
- 210 children on 10 Junior Ranger Club sessions.

## Publicity

- Maintained the 14 AONB Gateway Signs.
- At least 24 known press mentions for projects/AONB, worth at least £10,800 in advertising space.
- Distributed the AONB general information leaflet to 3 Tourist Information Centres and numerous other outlets.
- Developed the new AONB website, which received nearly 72,000 visits during 2007/08 (44,000 more than the old site in 06/07).
- Published and distributed our annual Newsletter (AONB News) in January/February 2008 (delayed from October 2007 by the postal strikes).
- Published and distributed our 2006/07 Annual Report in July 2007.
- Used the AONB display boards at 3 consultations/events.

## Income and Expenditure

Income	£	Expenditure	
Natural England	163,686	Staffing	87,586
North Yorkshire CC	39,750	Office costs	14,665
Ryedale DC	5,383	Partnership running costs	1,459
Hambleton DC	5,800	Publicity	9,491
Heritage Lottery Fund (balance in-hand)	11,878	Management Plan	1,300
Forestry Commission	2,161	Countryside management	32,145
CAN DO Partnership	2,000	Sustainable Development Fund	68,150
Environment Agency	500	Enjoying the AONB	985
		Discovery Project (HLF)	4,426
<i>Brought forward</i>	<i>16,093</i>	<i>Carried forward</i>	<i>19,592</i>
		<i>Carried forward (HLF)</i>	<i>7,452</i>
	<b>£247,251</b>		<b>£247,251</b>
		(Resources from grant recipients)	149,055
		<b>Total Value of AONB Unit Activity</b>	<b>£396,306</b>

## LEADING THE WAY

A new local action group is looking to breathe fresh life into rural communities by bidding for a slice of European funding from the new LEADER programme. The LEADER funding scheme was set up to assist rural communities to improve the quality of life and economic prosperity of their local area. This is achieved through innovative projects focussing primarily on basic services for rural communities, rural culture and heritage and village development and renewal.

The bid covers the Howardian Hills AONB, the North York Moors National Park and the Vale of Pickering. The European Commission and the Department for Environment, Food and Rural Affairs (DEFRA) will fund the scheme over a five year period.

In July a Local Development Strategy was submitted to Yorkshire Forward, who are the Regional Development Agency responsible for delivering LEADER in the region as part of the

Rural Development Programme for England. The group expects to hear the outcome of the bid this autumn, with spending on projects from early 2009. If the bid is successful there will be an opportunity for local people to join the Local Action Group where they can continue to say how the programme is delivered.

**Jen Smith, External Funding Officer,  
North York Moors National Park  
Authority**

## CAN DO LIME AND ICE PROJECT - BID SUCCESSFUL



White Horse and Hood Hill (North York Moors National Park Authority)

**The Lime & Ice Project has now begun thanks to a £500,000 award from the Heritage Lottery Fund and £225,000 from CAN DO partners.**

Communities were involved in developing the project which focuses on the area's distinctive landscape heritage. New circular trails, investigation into the historic landscape features at Yearsley Moor and an excavation at Boltby Scar

Iron Age hillfort are just some of the exciting activities that local people can get involved with through the project.

It is expected that a project officer will be appointed by November, with a project assistant in post early in 2009.

## CAN DO PARISH FUND – DON'T MISS THIS OPPORTUNITY!

Grants of up to £500 to support Parish Councils and other community groups who undertake projects relating to the cultural and natural heritage of the CAN DO area are on offer for schemes that can be completed by March 2009. All of the parishes in the western half of the AONB (stretching from the western boundary as far east as Stonegrave, Hovingham, Scackleton and Dalby-cum-Skewsby) are eligible.

For further information please contact Lyn Mansfield (CAN DO Partnership Co-ordinator) on 01439 770657 or e-mail [l.mansfield@northyorkmoors-npa.gov.uk](mailto:l.mansfield@northyorkmoors-npa.gov.uk) or look at the AONB website.



Refurbished village sign, Sproxton (AONB Unit)

## MOBILE POST OFFICE

The last of the established Post Office branches in the AONB closed recently. A Mobile Post Office is now operating, offering a full range of Post Office products. For further information please contact 01439 770237 or visit the van when it makes one of its scheduled visits.

Please don't forget to continue to support the village shops that we have in the AONB. Whilst they no longer contain Post Offices they still can provide for many of your day-to-day needs and some have taken the removal of their Post Office as an opportunity to expand their range of goods and services.



Mobile Post Office in Slingsby (AONB Unit)

	Monday	Tuesday	Wednesday	Thursday	Friday
Slingsby	10:45 - 12:45		10:15 - 11:30	09:45 - 11:00	10:15 - 11:45
Nunnington		15:15 - 16:15		08:30 - 09:30	
Terrington	08:30 - 10:30	13:30 - 14:45	11:45 - 13:00	11:15 - 12:30	12:00 - 13:15
Huttons Ambo		11:30 - 13:00			14:00 - 15:30

## A VERY SPECIAL LITTLE-DALE

Littledale is a Site of Importance for Nature Conservation (SINC) in a secluded valley close to Terrington. In recent months the appearance of Littledale has changed dramatically. Its fen habitats were being taken over by horsetail and the once species-rich grassland slopes were becoming covered with scrub, bramble and thistle.

Basics Plus and Volunteers from NYCC Countryside Service and the AONB have cleared a significant quantity of scrub. The site has been fenced and a water supply installed to enable grazing by Exmoor ponies.

Improvements to the grassland habitats on the slopes will take several years. After only one season's grazing, progress in the fen is already evident. It is envisaged that the site will continue to be grazed in mid/late summer to prevent the build-up of nutrient-rich plant material. Scrub management will also continue and both of these management actions will result in diversification of the flora throughout.



Littledale Site of Importance for Nature Conservation (AONB Unit)

## Be CALM

The Country Land & Business Association has launched a free on-line calculator to assess greenhouse gas (GHG) emissions and carbon sequestration on farms. The CALM Calculator (Carbon Accounting for Land Managers – available at [www.cla.org.uk/CALM](http://www.cla.org.uk/CALM)) takes into account emissions from energy and fuel use, livestock, cultivation and land-use change, and the application of nitrogen fertilisers and lime. These are balanced by carbon sequestered in soil and trees. This autumn FWAG (Farming & Wildlife Advisory Group) is running a project with support from the Howardian Hills SDF to estimate the carbon balance of 10 AONB farms. It will also advise on appropriate options to reduce emissions, and signpost farmers to renewable energy and grant-aid opportunities. **Watch out for the launch event in November.** For more information and to be involved with the project please contact FWAG on 01609 783632.

**Phil Lyth, Farm Conservation Advisor, FWAG**

## REDUCE, RE-USE, RECYCLE

Nationally and locally waste is an increasing issue. Landfill is viewed as unsightly; litter is an eyesore; and fly-tipping is dangerous to people and wildlife as well as being unattractive, illegal and expensive to tidy up. Three organisations working to combat these issues offer the following advice:

### FLY-TIPPING

**Fly-tipping is a serious offence carrying penalties of a £50,000 fine or five years imprisonment on conviction.**

Everyone has a duty of care to ensure that the waste they produce is dealt with correctly.

If items won't fit in your bin consider selling them or giving them to somebody else to use, arranging a special collection through your District Council, or taking most types of domestic waste to your local civic amenity site.

If you use a third party to remove your waste you must check that they have the authority to accept it. Always get a receipt which states their details and vehicle registration number. Collectors include:

- **Local Council Waste Collectors**
- **Registered Waste Carriers** – holding an Environment Agency registration certificate
- **Exempt Waste Carriers** – usually charities – registered with the Environment Agency
- **Businesses with a Waste Management Licence** to receive your kind of waste
- **Businesses with an exemption from waste licensing** – registered with the Environment Agency
- **Waste Brokers** – registered with the Environment Agency.



Roadside litter in the AONB (AONB Unit)

If you suspect that someone is breaking the law regarding waste please contact your District Council or the Environment Agency 24 hour hotline (0800 807060).

**Alan Scargill, Enforcement Officer, Hambleton District Council**

### STOP THE DROP

**The Campaign to Protect Rural England (CPRE) is seeking volunteers to help pick up litter near where they live or where they walk frequently. The national campaign is led by our President, Bill Bryson.**



Fly-tipping in the AONB (AONB Unit)

this. We would very much appreciate help to give more extensive coverage of the whole district. To volunteer please contact, Linda Sadler (Team Co-ordinator) on 01439 787018 or at [sales@lindasadler.co.uk](mailto:sales@lindasadler.co.uk).

**David Goodman, CPRE (Ryedale)**

### RECYCLING

**In the past, landfill has been accessible and cheap, but this is changing due to:**

- Sites filling up
- Government taxing waste to landfill at increasing levels
- Allocated permits reducing each year
- Some wastes being restricted or banned

To reduce landfill problems, householders all over Britain are being asked by their councils to separate rubbish for recycling. Ryedale District Council is performing extremely well, but there is still a long way to go.

Waste minimisation is being promoted county-wide to avoid unnecessary waste, particularly for the increasing problem of discarded food. Re-usable bags, home composting, smart shopping and real nappies are also being encouraged.

To find out more about recycling and waste minimisation in Ryedale contact Ryedale District Council's Recycling Officer. Tel 01653 600666 or e-mail [com.services@ryedale.gov.uk](mailto:com.services@ryedale.gov.uk). In Hambleton please telephone 0845 1211 555 or visit [www.hambleton.gov.uk/environment/recycle](http://www.hambleton.gov.uk/environment/recycle). A list of recycling facilities in North Yorkshire can be accessed by searching 'Household Waste Recycling Centres' on [www.northyorks.gov.uk](http://www.northyorks.gov.uk).

**John Brown, Recycling Officer, Ryedale District Council**



Clothes recycling facility (AONB Unit)

## JUNIOR RANGER CLUB

Having already enjoyed two days of springtime activities in Husthwaite, the AONB Junior Ranger Club (JRC) is taking place again in October and December. Activities for 5-12 year olds will take place at Gilling Castle in October and at The Arboretum, Castle Howard, in December. Why not come along and join in the fun? There's plenty to do indoors and outdoors. The cost is £2.00 per child per session and you can either choose one session or book onto all four. For further information please keep your eye on the AONB website and to find out if any places are still available for October half-term you can ring Yorkshire Wildlife Trust on 01904 659570.



## NEW MANAGEMENT PLAN

The AONB Management Plan is currently undergoing its first 5-year review, as required by Government legislation. Discussions have been held with a wide variety of partner organisations and the formal Consultation Draft is due to be sent out to organisations, Parish Councils, farmers and land managers at the beginning of November.

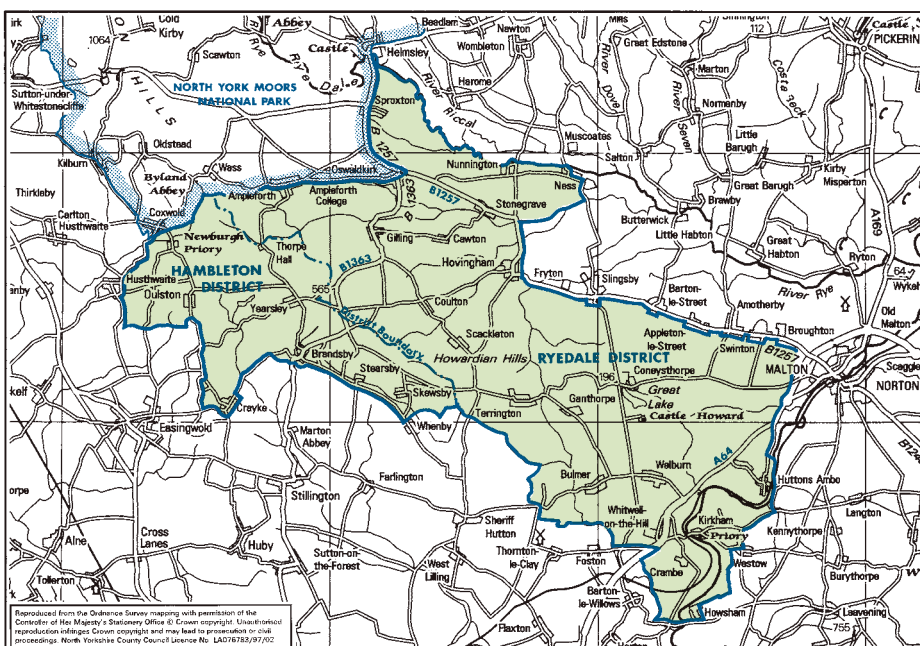
The consultation period will end on 12th December 2008, after which all the comments will be evaluated and the Plan amended accordingly. The new Management Plan has to be adopted by the County and District Councils by 31st March 2009 and also sent to Defra. It will then come into force on 1st April, running until 2014.

If you would like to view the Consultation Draft, or submit comments, please visit [www.howardianhills.org.uk/11/Management\\_Plan.html](http://www.howardianhills.org.uk/11/Management_Plan.html)

The individual sections, supplementary information and maps are available as downloadable PDF files, together with a response form for your feedback.

Left: Junior Rangers emptying a mammal trap (AONB Unit)

## HOWARDIAN HILLS AONB FACT FILE



- The Howardian Hills covers 204 sq. km (79 sq. miles).
- The area was confirmed as an AONB in 1987.
- About 9,300 people live in or immediately adjacent to the area.
- Over 15% of the area is wooded.



This Newsletter has been produced by the Howardian Hills AONB JAC